

Importing questions through Aiken format

The Loch Ness Monster is a type of?

- A. Homonid**
- B. Lizard**
- C. Ape**
- D. Plesiosauria**

ANSWER: D

The Coelacanth was considered a cryptid until 1938.

- A) True**
- B) False**

ANSWER: A

An example of Aiken Format importing file

Overview:

This guide will show you how to import multiple choice questions through an Aiken Format importing file.

What to know:

Aiken Format is a simple format for importing multiple choice questions from a text file.

Hint:

It only supports multiple choice questions with one option as the correct answer.

Table of Contents

[Step 1: Write the questions](#)

[Step 2: Save the file](#)

[Step 3: Import the file into the Question Bank](#)

Step 1: Write the questions

Write your questions in a word-processing application (e.g., MS Word) or a text editor such as Notepad (Windows) or Text Edit (Mac OS X), under the following format:

1. Question text: the question must be all in one line.
2. Options:
 - Start with a single uppercase letter;
 - Followed by a period "." or a right parenthesis ")", then space, e.g. 'A. ' or 'A) ';
3. Correct answer: The answer line must immediately follow, starting with "ANSWER: " (with a space after the colon) and then give the letter for the correct answer.
 - Note: The word "ANSWER" and the answer letters (A,B,C etc.) must be capitalized as shown, otherwise the import will fail.

The Loch Ness Monster is a type of?

- A. Homonid**
- B. Lizard**
- C. Ape**
- D. Plesiosauria**

ANSWER: D

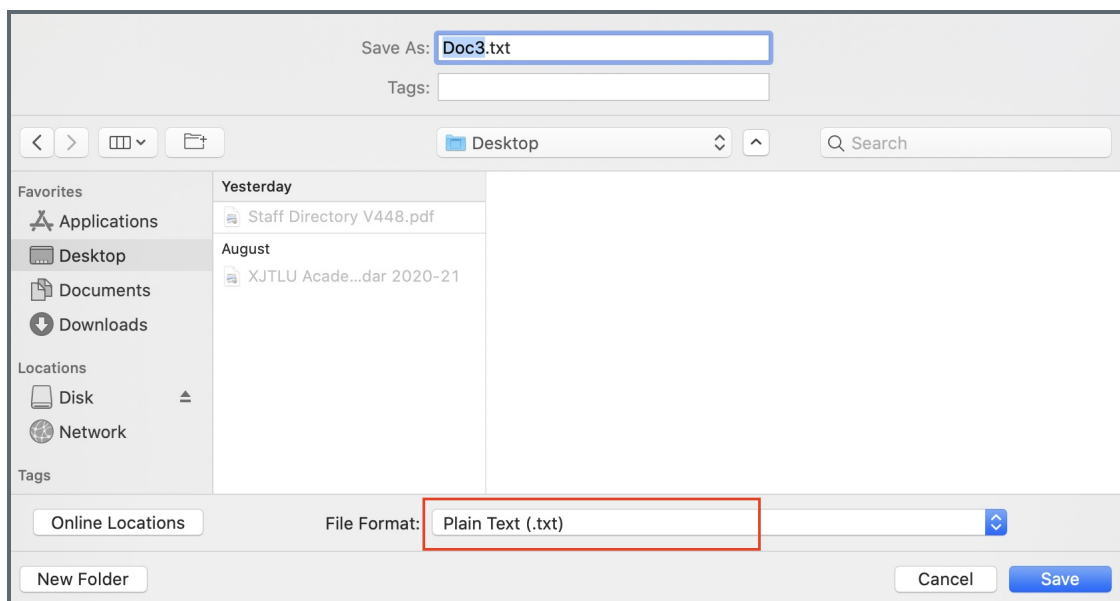
The Coelacanth was considered a cryptid until 1938.

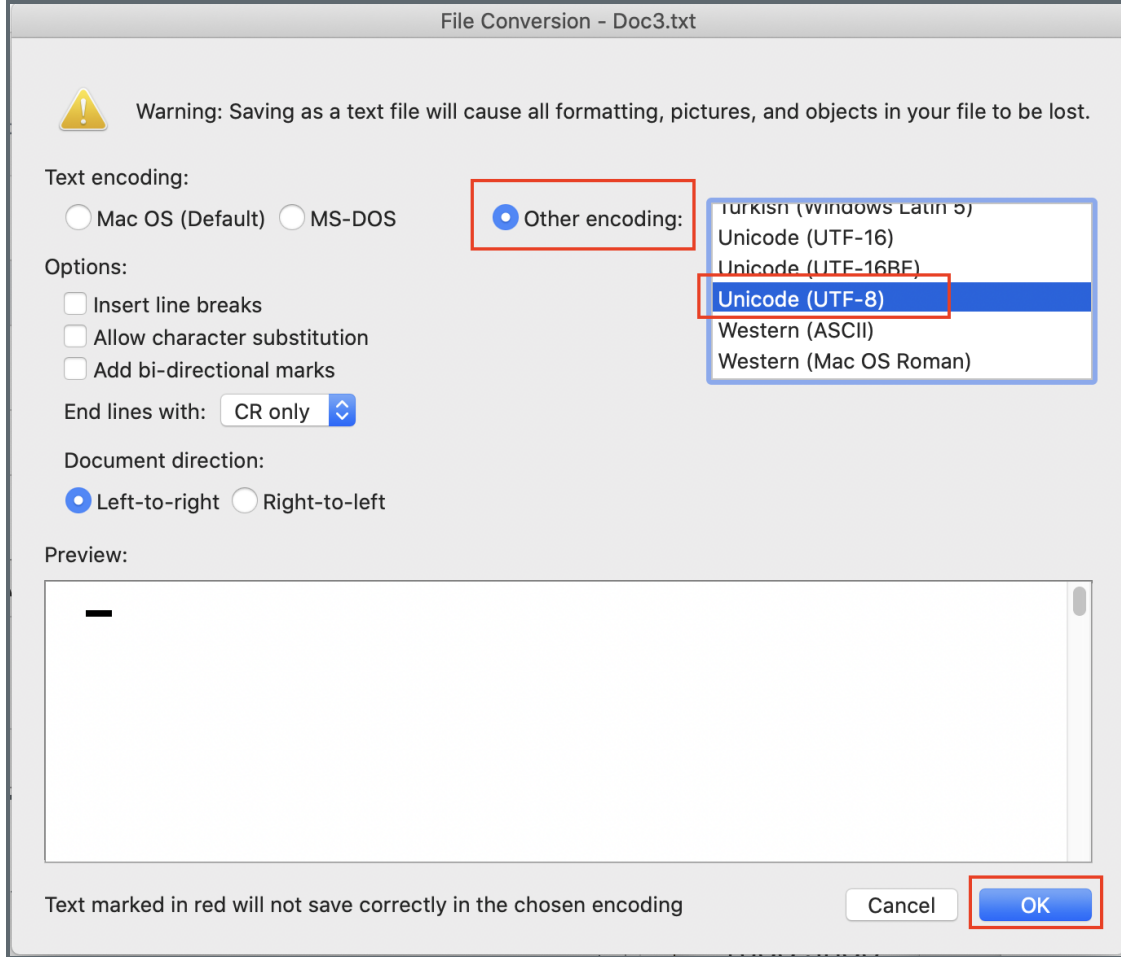
- A) True**
- B) False**

ANSWER: A

Step 2: Save the file

1. Click 'Save as' to save your file
2. Choose to save the file as a '.txt' (plain text) file
3. Choose the encoding format to be UTF-8 format .





Step 3: Import the file into the Question Bank








Please see the article [Import questions from word file](#) to upload the file and import the questions.

For the first step of importing a file, choose the file format 'Aiken format', and then follow the screenshot below to finish the rest of the steps.

Import questions from file

[Collapse all](#)

File format

- Aiken format 
- Blackboard 
- CSV format 
- Embedded answers (Cloze) 
- GIFT format 
- Missing word format 
- Moodle XML format 

General

Import questions from file

Import 

Choose a file...



You can drag and drop files here to add them.

Import

Additional resource:

Here is the official documentation about importing questions by Aiken format:

https://docs.moodle.org/310/en/Aiken_format

Online URL: <https://knowledgebase.xjtlu.edu.cn/article/importing-questions-through-aiken-format-24.html>